

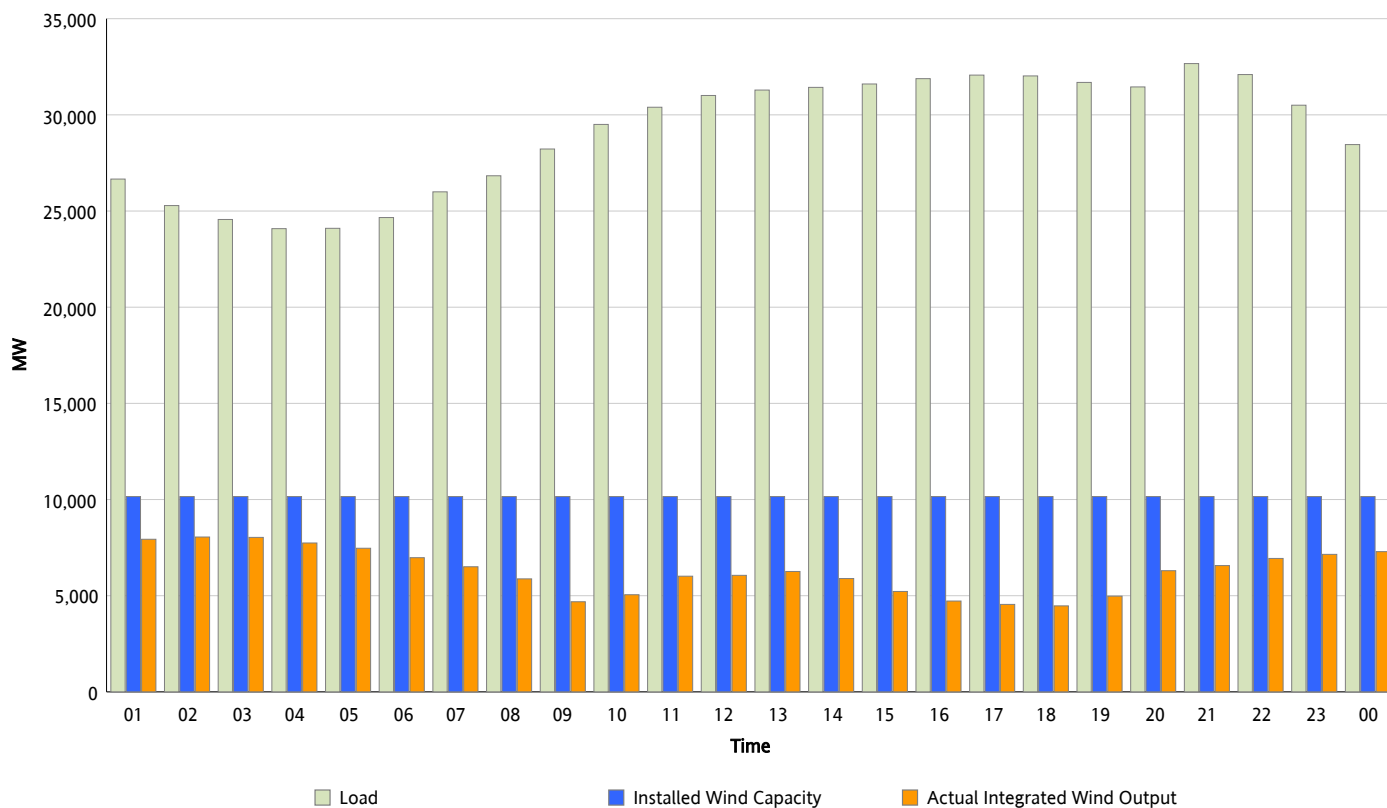


ERCOT Grid Operations

Wind Integration Report : 04/13/2013

Peak Load	32,668 MW
Load Peak Hour (HE)	21
Wind Over Peak	6,567 MW
Wind Record 02/09/13	9,481 MW
Max Wind Value*	8,197 MW
Wind Peak Time	02:04
Wind Integration %	33.03 %

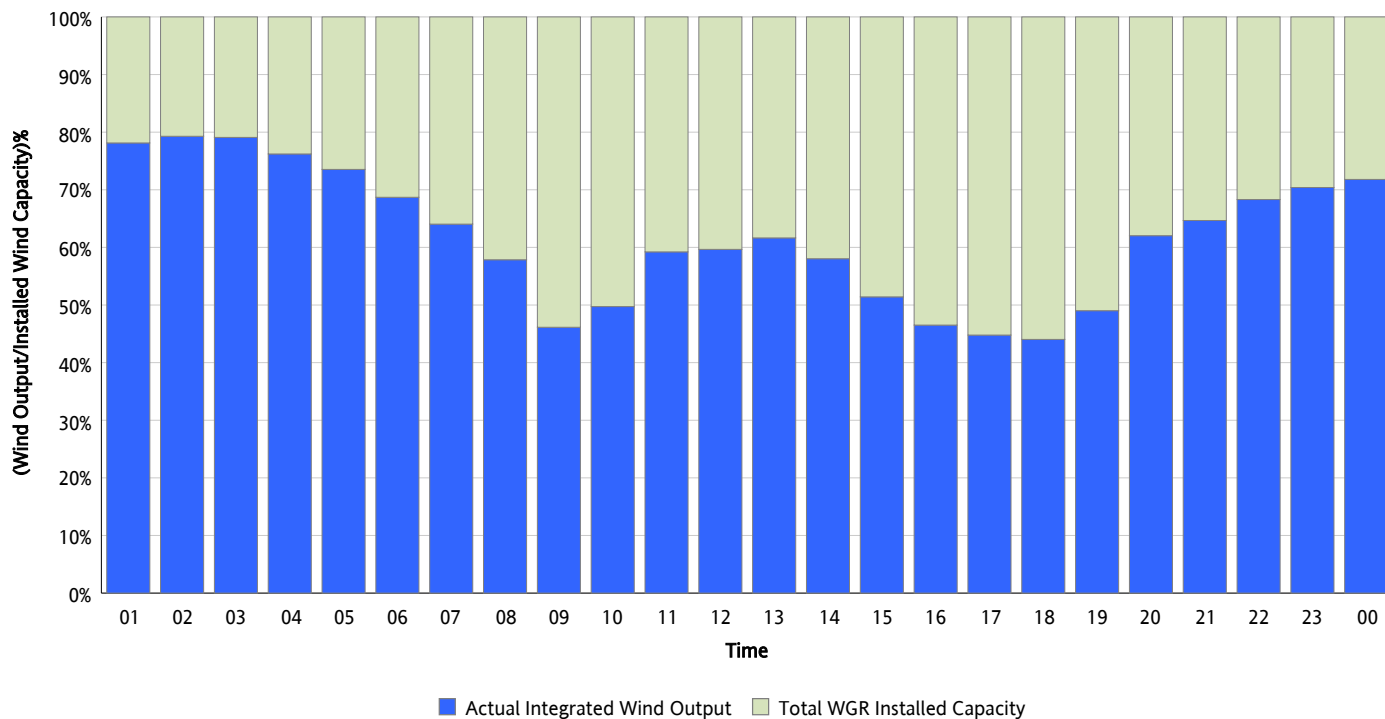
Hourly Average Actual Load vs. Actual Wind Output
04/13/2013



** Wind Record and Wind Max represent instantaneous values and the rest of the values are integrated over the hour*

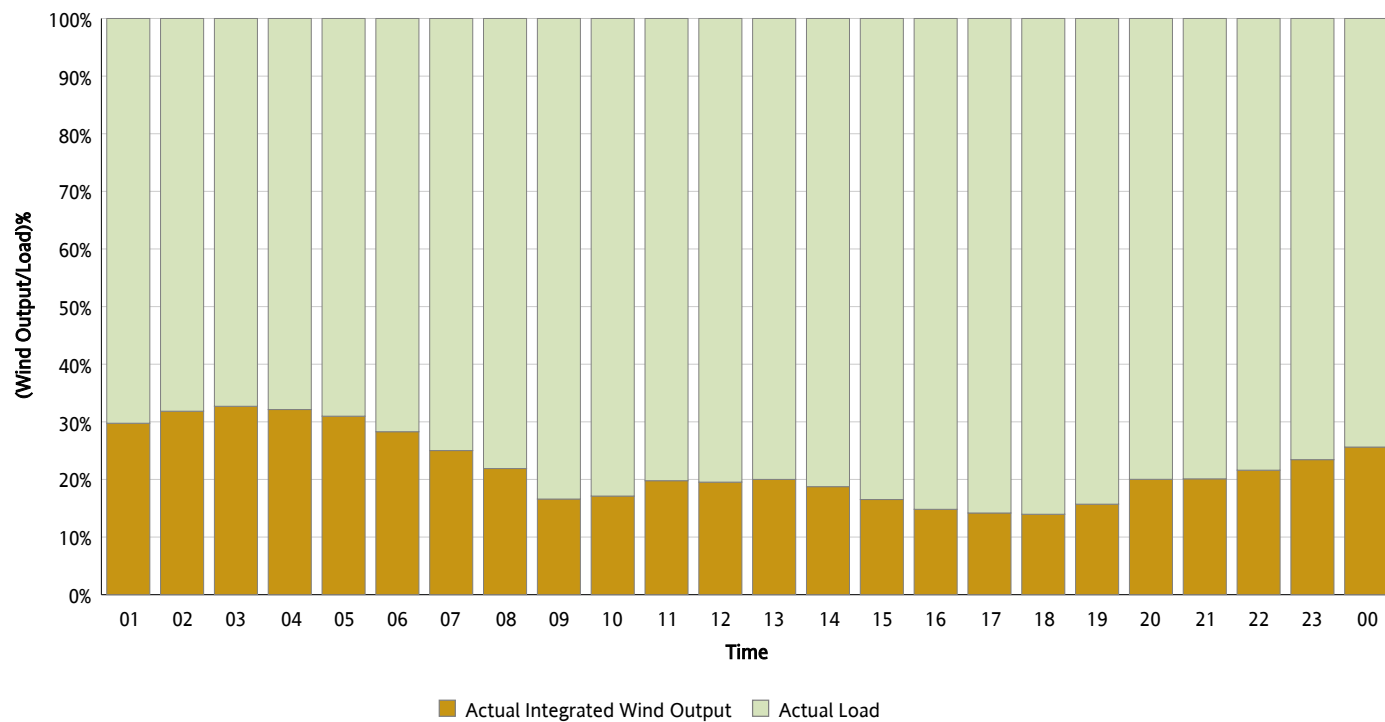
Actual Wind Output as a Percentage of the Total Installed Wind Capacity

04/13/2013



Actual Wind Output as a Percentage of the ERCOT Load

04/13/2013



ERCOT Load vs. Actual Wind Output

04/06/2013 - 04/13/2013

